

EX2.2 Technical Data Sheet

Introduction

The EX2.2 is a double 12", compact, active subwoofer system. On-board electronics include a stereo crossover with high pass outputs and full overdrive protection.

Featuring KV2 Audio's switching amplifier technology, precision manufactured woofer designs and a high efficiency, twin chamber acoustic design, the EX2.2 delivers tight, fast, controlled bass response at very high output levels from a small cabinet footprint.

Features

- Professional, Baltic birch construction with wear resistant polymer coating
- 130dB sustained output, 133dB peak
- 1000W high efficiency, current-enhancing, switching, low frequency amplifier
- Complete on board subwoofer management including equalization, crossover filters, amplifier overdrive protection, output level and phase controls
- Excellent reproduction of bass frequencies with high transient content at high output levels
- Stereo or Mono inputs with through signal outputs and 120Hz High Pass outputs
- Two 12" high output, low frequency drivers with 3" (75 mm) inside/outside, epoxy baked, high temperature, voice coil assembly and neodymium magnetic structures
- Two recessed side handles for simplified handling and carrying
- Acetyl copolymer, high impact, low friction feet are located on two sides allowing lock-in and easy cabinet movement
- Two internal corner braces with four M10 suspension points
- M20 top hat for pole mounting applications
- LED indicators for signal present, limiter, thermal condition and power ON status



Application

Specifically designed to accompany and compliment the EX10 / EX26 as a true full range high output system

- Portable PA applications
- Fixed Installations
- Scalable into multiple-larger systems
- Easy to add to existing systems

System Acoustic Performance	
Max SPL Long-term	130dB
Max SPL Peak	133dB
-3dB Response	45Hz to 125Hz
-10dB Response	40Hz to 125Hz
Crossover Point	125Hz

Low Frequency Section	
Acoustic Design	Twin Asymmetrical loading
Number of Drivers	2
Woofer Size / Voice Coil Diameter / Design	12" / 3" / Inside Outside
Diaphragm Material	Epoxy Reinforced Cellulose
Magnet Type	Neodymium

Low Frequency Amplifier Specification	
Type	High efficiency, Current-enhancing switch mode
Rated Continuous Power	1000W
Distortion	<0.05%
Operating Bandwidth	40Hz to 125Hz

Signal Input	
Input Channels	2
Input Sensitivity	1.0V RMS
Input Impedance	20 kΩ

Signal Output	
Output Channels	Mid/High, Through

Features	
Level Control	-6 to +6dB
Phase	0° / 180°
RMS Limiter	YES

Power	
Power Connector	Neutrik PowerCon®
Operating Voltage	115V / 230V / 250V
Operating Voltage Range	100 to 120V@60Hz 205 to 240V@50Hz 225 to 260V@50Hz
Recommended Amperage	10A 115V 5A 230V 5A 250V
Cooling	Passive

Cabinet	
Cabinet Material	Baltic birch
Handles	2
Pole Mount	M20
Color	"Orange peeled" Matt Black or any RAL

Physical Dimensions	
Height	491 mm (19.33")
Width	594 mm (23.38")
Depth	616 mm (24.25")
Weight	49 kg (107.8lbs)

EX2.2 Technical Data Sheet

Architectural Specifications

The Loudspeaker shall be a Twin Chamber Asymmetrical Bandpass design, using SLA Technology - (Super Live Audio), Amplifier power, electronic crossovers, phase alignment, equalisation and speaker protection are integrated into the EX1.2's amplifier module.

The Loudspeaker enclosure shall consist of two 12" Neodymium magnet structure Low Frequency-high definition woofer driver.

The cabinet enclosure shall be made from reinforced Baltic Birch Ply, with toughened impact and wear resistant paint finish.

The enclosure shall include four high impact, low friction feet on the bottom panel.

The EX2.2 Amplifier shall provide 1000W. The EX2.2 Amplifier control panel shall feature AC power in, XLR connector audio input and output, level control potentiometer +/- 6dB, LED status light (power, limit/thermal signal input indicator). The EX2.2 amplifier shall have an input Impedance of 20Kohm. The input sensitivity shall be 1.0V RMS.

The EX2.2 shall use balanced, female XLR connectors for audio signal input, and male XLR connectors to provide through output signal.

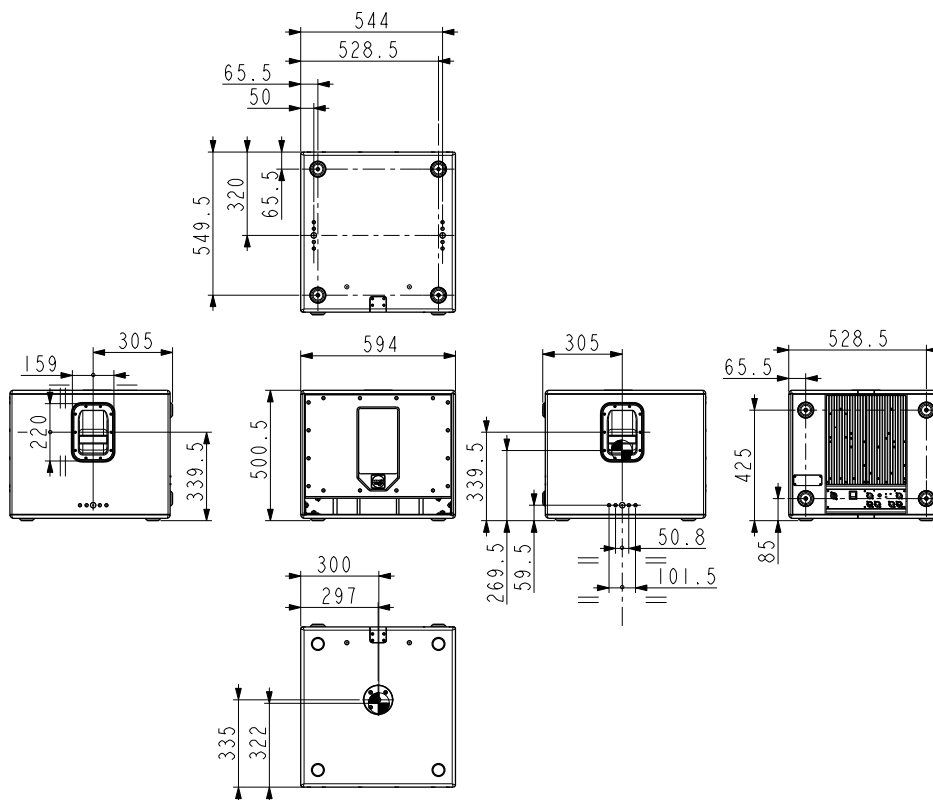
The EX2.2 shall feature Left and Right stereo inputs and outputs allowing the product to be integrated into stereo systems that require one subwoofer. The EX2.2 shall also feature Left and Right High Pass Outputs that can be used to provide audio signal to full range speakers being used in conjunction with the EX2.2. The high pass filter shall provide a crossover point of 125Hz. The EX2.2 features a phase switch that changes the phase of the high pass audio output signal.

The EX2.2 Amplifier shall have a Neutrik PowerCon connector for mains supply, with an operating voltage range of 100 to 120V @ 60Hz or 230 to 250V @ 50Hz. The power amplifier shall have recommended amperage of 10A @115V, 5A @230V.

The system acoustic performance shall be -3dB 45Hz -125kHz. The system maximal long term SPL shall be 130dB.

The Speaker shall have dimensions of: Height 491 mm / 19.33", Width 594 mm / 23.38", Depth 616 mm / 24.25", The weight shall not exceed 49 kg (107.8lbs)

Dimensional Drawings



The future of sound. Made perfectly clear.



KV2 Audio International, Nádražní 936, Milevsko 399 01, Czech Republic
Tel.: +420 383 809 320
Email: info@kv2audio.com | Web: www.kv2audio.com